

DESCENDANT COMMUNITY OF MILWAUKEE COUNTY GROUNDS CEMETERIES, INC.

by Judy Klimt Houston, President

<https://descendantcommunity.org>

**PART 5: CEMETERY TWO & DOYNE AVENUE**

We've been dead so long here on the hill that nobody remembers us.

Can you believe that?

One hundred years or so and nobody knows that we ever lived.

But we lived. Yes, indeed. Just like you are living now, eating and sleeping and breathing and working and loving.

**Meet Some of Us**

We were Germans, most of us, and we came to this place when it was rough and wild. We hacked the stumps off the land and we dug into the soil with our hands to plant things. We were farmers, and we came across wild seas and dark wilderness to grow things here.

We came here when we were young and strong and looking for a place to think our own thoughts. We worked like hell, and we helped pull the claws out of this wild country. We were proud of that.

Nurses' Residence shaped as a side-lying "H" eastern side of burial site. Cemetery 2 noted as shaded area and "X'd" zone indicates burials remaining intact as of 2022.

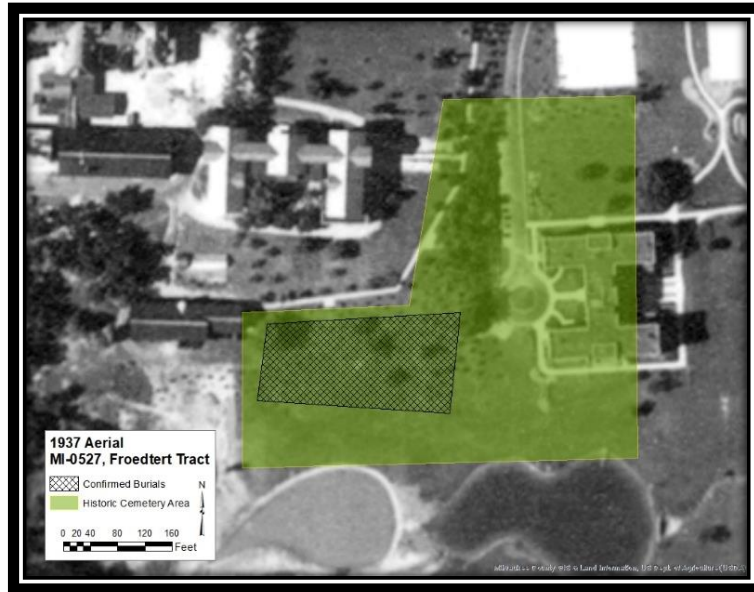


Fig. 1 - County Grounds Cemetery 2 development through the years (aerial photos pp. 1-3). Courtesy - WHS Milwaukee Poor Farm Aerial History 1937-2022

Fig. 2 - Journal: 26 Jan 1972. Except: "The Dead Talk to Us Before Moving On"

"...determined by the 2013 excavations, it is estimated that **roughly 209 adult-sized graves and roughly 671 juvenile/infant-sized graves remain intact under and along the southern edge of Doyne Avenue.**"<sup>1</sup>

"...any improvements to Doyne Ave. undertaken by Milwaukee County should be carefully considered with the presence of these burials in mind."<sup>1</sup>

See Fig. 3, 1991/92 EXCAVATION MAP<sup>2</sup>

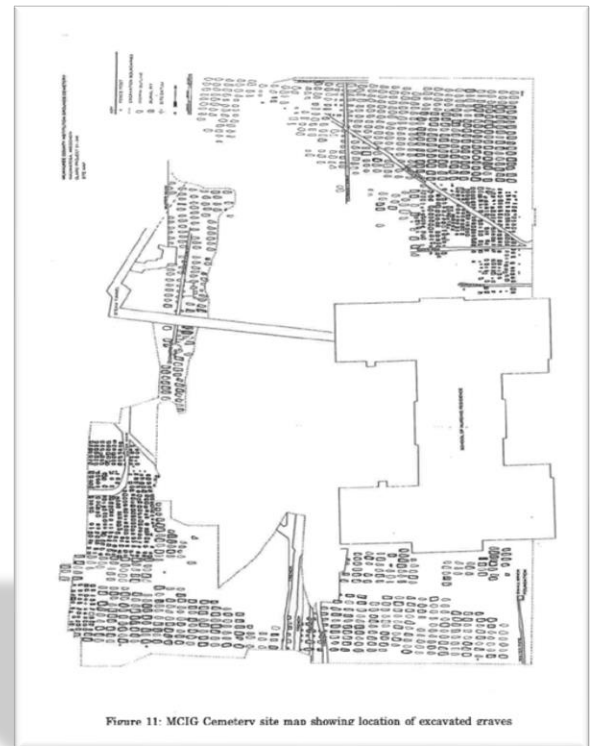
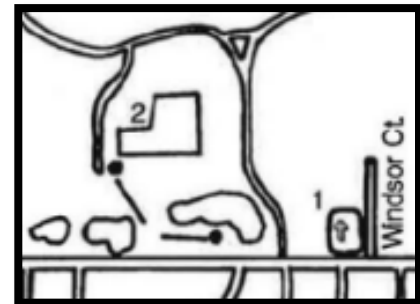


Fig. 3 -1991/92 Excavation Map

*Disclaimer: Aerial images showing cemetery map placement(s) are from a 2022-2023 WHS slideshow presentation and are subject to minor changes when provided by the WHS.*



By 1980,  
the Nurses' Residence is now known as the School of Nursing. Doyne Avenue was not present.



Mar 1980's GLARC survey, completed at the request of the County, indicated the existence of this cemetery. Regardless, the widely known graves had a roadway constructed over the burials sometime around 1985 – most likely, prior to the newly enacted Wisconsin burial protection law.

(See also: Part 4 of this series.)

*Disclaimer: Aerial images showing cemetery map placement(s) are from a 2022-2023 WHS slideshow presentation and are subject to minor changes when provided by the WHS.*



1990 aerial prior to **“discovery”** of Cemetery 2 due to construction of a roadway in August 1991. Following the State’s approval for a burial disturbance permit, 1,649 individuals were exhumed costing the County’s taxpayers approximately \$700,000.



1995 & 2005 aerials indicated the Froedtert addition after the 1991/92 exhumations of 1,649 individuals. 2022 view is after the 2013 exhumations of 831 individuals and the 2014 Froedtert addition.



**2024: No signage exists at Cemetery 2 to honor these Milwaukee County residents.**

*Disclaimer: Aerial images showing cemetery map placement(s) are from a 2022-2023 WHS slideshow presentation and are subject to minor changes when provided by the WHS.*

## WORKS CITED

---

- <sup>1</sup> Richards, P.B. et al., *“Nine For Mortal Men Doomed to Die: The Archaeology and Osteology of the 2013. Milwaukee Country Poor Farm Cemetery Project.”* (2016, pgs. 5-6)
- <sup>2</sup> Richards, Patricia B. and. M. Kastell, *“Archaeological Excavations Almshouse Burial Ground Milwaukee County Poorhouse, Wauwatosa, WI.”* GLARC Report of Investigations No. 333 (1993, p. 57)

*Disclaimer: Aerial images showing cemetery map placement(s) are from a 2022-2023 WHS slideshow presentation and are subject to minor changes when provided by the WHS.*